

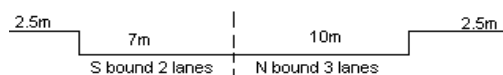
YEAR 2013

COVERAGE (B) STATION 4211

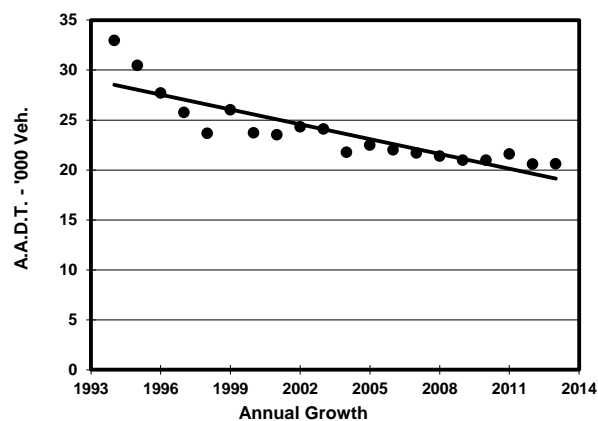
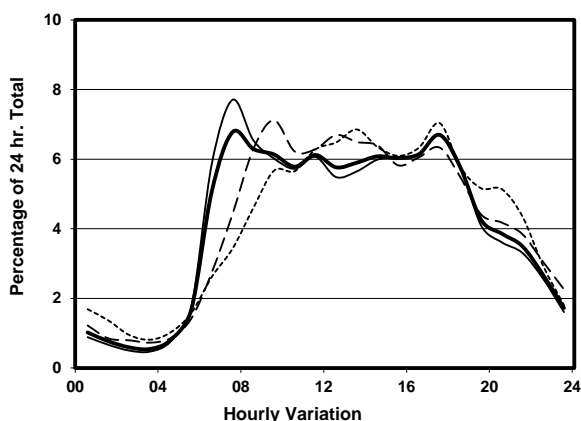
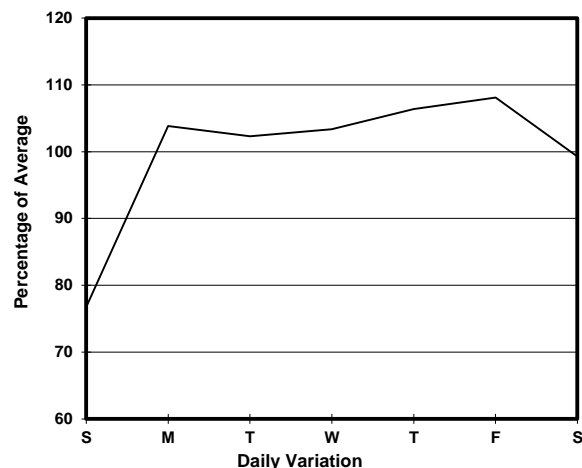
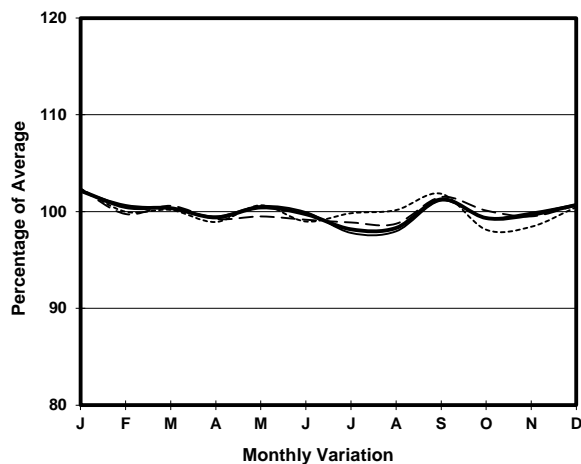
ROAD NETWORK MAJOR

ROAD TYPE DISTRICT DISTRIBUTOR

LINK FAT KWONG ST (from CHUNG HAU ST to YAN FUNG ST)



1. TRAFFIC FLOW VARIATION AND GROWTH



2. TRAFFIC CHARACTERISTICS (BY DIRECTION)

| Parameter | All - Day | Mon. - Fri. | Sat. | Sun. |
|--------------------------------------|-----------|-------------|-----------|-----------|
| SOUTH BOUND | | | | |
| A.A.D.T. | 11710 | 12480 | 11680 | 8980 |
| R 12 / 24 - % | 75.2 | 75.6 | 75.4 | 72.4 |
| R 16 / 24 - % | 88.4 | 88 | 89.7 | 88.9 |
| AM Peak Hour | 0700-0800 | 0700-0800 | 0900-1000 | 0900-1000 |
| One-way flow at AM peak hour | 880 | 1080 | 950 | 510 |
| T - % (AM) | - | 12.9 | - | - |
| PM Peak Hour | 1700-1800 | 1700-1800 | 1700-1800 | 1700-1800 |
| One-way flow at PM peak hour | 750 | 770 | 750 | 690 |
| T - % (PM) | - | 8.2 | - | - |
| Prop.of commercial vehicles - 16 hr. | - | 8.8 | - | - |
| NORTH BOUND | | | | |
| A.A.D.T. | 8900 | 9400 | 9040 | 7040 |
| R 12 / 24 - % | 71.3 | 71.7 | 71.4 | 68.2 |
| R 16 / 24 - % | 87 | 86.8 | 88.3 | 87.3 |
| AM Peak Hour | 0700-0800 | 0700-0800 | 0900-1000 | 0900-1000 |
| One-way flow at AM peak hour | 510 | 610 | 530 | 400 |
| T - % (AM) | - | 12.9 | - | - |
| PM Peak Hour | 1700-1800 | 1700-1800 | 1600-1700 | 1700-1800 |
| One-way flow at PM peak hour | 630 | 700 | 600 | 430 |
| T - % (PM) | - | 5.6 | - | - |
| Prop.of commercial vehicles - 16 hr. | - | 7.2 | - | - |

3. OTHER INFORMATION AND COMMENT

4. Vehicle classification and occupancy - Monday to Friday

| Time | | Class of vehicle | | | | | | | | | |
|------------------------|-----|------------------|----------------|------|---------------|------|------------|-------|----------------|---------|------|
| | | Motor Cycle | Private Car | Taxi | Private LB | PLB | Goods veh. | | Non Fr. Bus | Fr. Bus | |
| | | | | | | | Light | M & H | | SD | DD |
| 0700-0800 Peak hour | Pro | 4.1 | 16.0 | 40.7 | 4.9 | 12.7 | 8.6 | 4.1 | 4.1 | 0.0 | 4.6 |
| | Ocp | 1.1 | 1.6 | 2.2 | 6.8 | 12.0 | 1.6 | 1.5 | 8.6 | 0.0 | 31.7 |
| 0800-0900 | Pro | 3.0 | 47.2 | 22.0 | 4.3 | 7.8 | 8.9 | 0.8 | 3.5 | 0.0 | 2.6 |
| | Ocp | 1.1 | 1.3 | 2.1 | 5.4 | 13.7 | 2.0 | 1.3 | 14.8 | 0.0 | 30.7 |
| 0900-1000 | Pro | 1.4 | 45.9 | 23.0 | 1.7 | 10.6 | 8.6 | 3.4 | 2.4 | 0.0 | 3.0 |
| | Ocp | 1.3 | 1.2 | 2.0 | 1.2 | 12.4 | 1.2 | 1.2 | 20.3 | 0.0 | 17.2 |
| 1000-1100 | Pro | 3.5 | 30.3 | 27.2 | 2.1 | 7.1 | 19.4 | 3.5 | 4.2 | 0.0 | 2.6 |
| | Ocp | 1.0 | 1.4 | 1.9 | 2.8 | 12.2 | 1.5 | 1.1 | 18.4 | 0.0 | 13.9 |
| 1100-1200 | Pro | 1.4 | 32.6 | 24.7 | 4.7 | 6.8 | 20.4 | 2.9 | 3.9 | 0.0 | 2.6 |
| | Ocp | 1.0 | 1.4 | 1.9 | 2.0 | 13.2 | 1.5 | 1.6 | 11.3 | 0.0 | 15.7 |
| 1200-1300 | Pro | 3.6 | 37.9 | 22.0 | 3.3 | 8.1 | 16.3 | 1.2 | 5.4 | 0.0 | 2.2 |
| | Ocp | 1.3 | 1.4 | 2.0 | 3.1 | 12.8 | 1.6 | 1.3 | 14.3 | 0.0 | 16.5 |
| 1300-1400 | Pro | 1.0 | 34.4 | 29.3 | 1.7 | 8.9 | 16.7 | 1.4 | 4.4 | 0.0 | 2.2 |
| | Ocp | 1.0 | 1.4 | 2.2 | 2.0 | 11.3 | 1.5 | 1.8 | 5.2 | 0.0 | 16.5 |
| 1400-1500 | Pro | 3.9 | 34.3 | 23.4 | 2.4 | 8.7 | 18.6 | 3.6 | 2.1 | 0.0 | 2.9 |
| | Ocp | 1.1 | 1.4 | 2.2 | 3.1 | 8.2 | 1.5 | 1.3 | 2.0 | 0.0 | 11.3 |
| 1500-1600 | Pro | 3.6 | 34.2 | 21.2 | 2.9 | 9.4 | 17.3 | 5.4 | 3.2 | 0.0 | 2.9 |
| | Ocp | 1.3 | 1.3 | 2.2 | 1.8 | 11.2 | 1.5 | 1.2 | 4.7 | 0.0 | 14.3 |
| 1600-1700 | Pro | 2.4 | 41.4 | 23.4 | 1.7 | 7.2 | 15.9 | 2.1 | 2.8 | 0.0 | 3.1 |
| | Ocp | 1.1 | 1.6 | 2.2 | 2.4 | 12.2 | 1.4 | 1.7 | 7.3 | 0.0 | 18.7 |
| 1700-1800 | Pro | 2.6 | 40.7 | 24.6 | 3.6 | 8.9 | 12.8 | 0.7 | 3.0 | 0.0 | 3.2 |
| | Ocp | 1.0 | 1.4 | 2.3 | 4.8 | 15.1 | 1.4 | 2.0 | 17.3 | 0.0 | 23.2 |
| 1800-1900 | Pro | 1.9 | 46.4 | 26.3 | 0.3 | 8.3 | 10.5 | 1.1 | 3.0 | 0.0 | 2.1 |
| | Ocp | 1.1 | 1.4 | 2.3 | 1.0 | 15.4 | 1.3 | 1.0 | 9.5 | 0.0 | 27.5 |
| 1900-2000 | Pro | 1.6 | 52.2 | 24.5 | 1.1 | 8.6 | 7.0 | 1.6 | 1.3 | 0.0 | 2.2 |
| | Ocp | 1.0 | 1.4 | 2.2 | 2.3 | 14.1 | 1.2 | 1.7 | 12.2 | 0.0 | 25.7 |
| 2000-2100 | Pro | 2.3 | 40.3 | 34.7 | 1.4 | 11.3 | 4.2 | 0.5 | 1.9 | 0.0 | 3.4 |
| | Ocp | 1.2 | 1.5 | 1.8 | 3.0 | 12.8 | 1.6 | 2.0 | 7.5 | 0.0 | 15.3 |
| 2100-2200 | Pro | 5.6 | 36.3 | 34.6 | 0.0 | 14.5 | 2.2 | 1.1 | 2.2 | 0.0 | 3.5 |
| | Ocp | 1.4 | 1.6 | 1.9 | 0.0 | 12.3 | 2.8 | 3.0 | 4.5 | 0.0 | 14.4 |
| 2200-2300 | Pro | 4.2 | 34.6 | 36.0 | 0.0 | 15.2 | 2.8 | 1.4 | 0.0 | 0.0 | 5.9 |
| | Ocp | 1.3 | 1.6 | 2.1 | 0.0 | 10.9 | 1.5 | 3.0 | 0.0 | 0.0 | 12.9 |
| 16 hours | Pro | 2.8 | 38.7 | 26.4 | 2.4 | 9.2 | 12.5 | 2.2 | 3.1 | 0.0 | 2.9 |
| | Ocp | 1.2 | 1.4 | 2.1 | 3.6 | 12.5 | 1.5 | 1.4 | 11.2 | 0.0 | 19.6 |

Legend

Pro. Proportion of vehicles in % (Sum may not add up to 100% due to figure rounding)
Ocp. Average occupancy of vehicles
M&H Medium and Heavy